

# MINTRA®

Group Legal Structure 31.05.2025



D E V E L O P & D E P L O Y



[mintra.com](https://mintra.com)

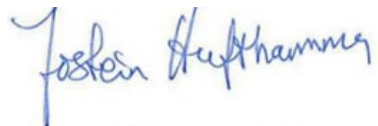
# Confirmation Statement

I confirm the correctness and completeness of the shareholder structure of companies held by Mintra Holding AS.

We also confirm the shareholder structure of Minerva Topco AS as per 08.04.2025.

31.05.2025

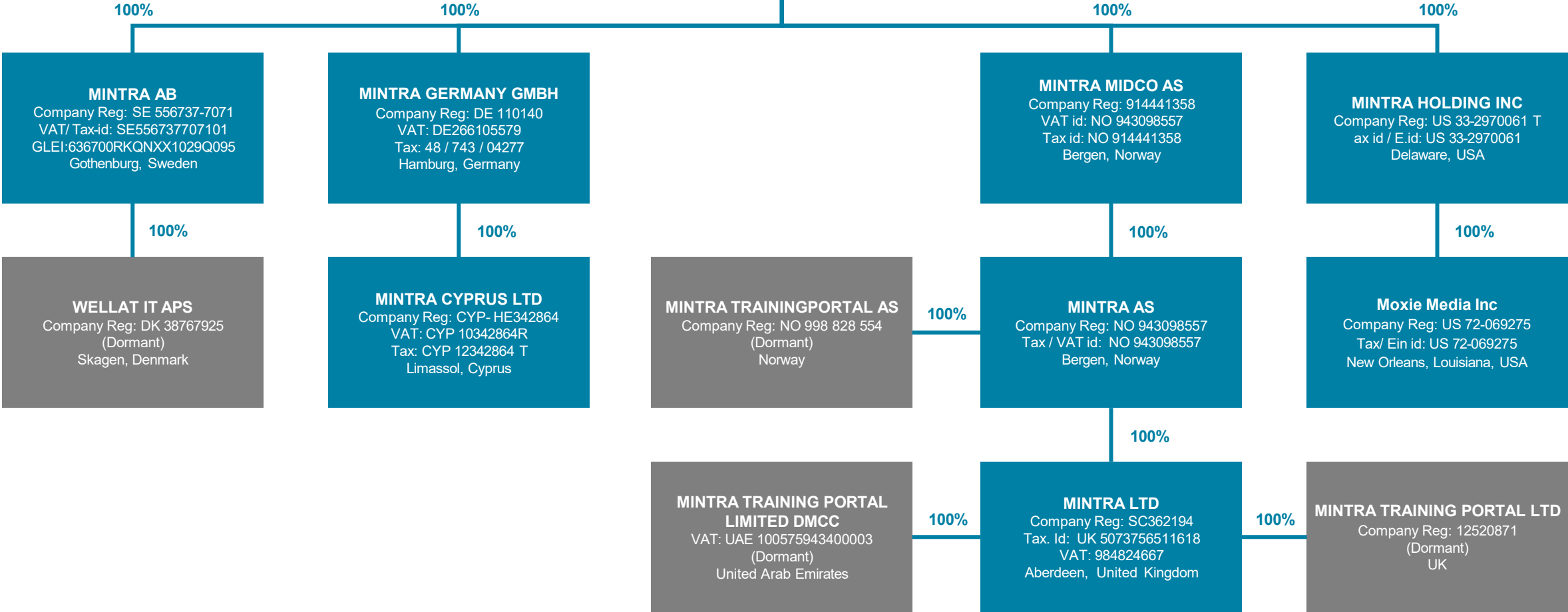
Mintra

A handwritten signature in blue ink that reads "Jostein Hufthammer". The signature is written in a cursive style.

Jostein Hufthammer CFO

# Group Structure

**MINTRA HOLDING AS**  
 Company Reg: 914441307  
 VAT id: NO 943098557  
 Tax id: NO 914441307  
 GLEI:98450009R2EDOB595846  
 Bergen, Norway



# Shareholders – Mintra Holding AS - 100% hold by Minerva Topco AS (NO 930 836 567)

## Minerva Topco AS – Shareholders – Updated 8.4.2025

Name	Jurisdiction	Type	Owner portion	UBO	No of shares
Ferd AS	NO	investor	51.885%	Johan H. Andresen holds 69.98 % voting rights	120,275,487
Tjaldur Holdco II AS	NO	investor	42.360%	no individual holds > 20 % of shares in Tjaldur	98,195,512
Kevin Short	IE	employee	0.973%	CEO	2,255,368
Jomaho AS	NO	investor	0.862%		1,997,407
Gareth Gilbert	GB	employee	0.673%	COO	1,560,526
Silla Invest AS	NO	employee	0.657%	Siren Berge, CTO, 100%	1,522,744
Eirik Meland Invest AS	NO	employee	0.635%		1,470,973
Sayonara AS	NO	investor	0.447%		1,036,269
Anders Stefan Barstad	NO	employee	0.417%		966,461
CEC Partners Holdings LLP	GB	investor	0.179%		414,507
David Reilly	GB	employee	0.163%		377,224
Ketil Toska	NO	employee	0.160%		371,007
Vålerenga Kremmerverksted AS	NO	investor	0.112%		259,067
Gjøvdal Fossekompani AS	NO	investor	0.089%		207,253
Kyrvatn AS	NO	investor	0.089%		207,253
Kjetil Gripne Flood	NO	employee	0.058%	CCO	133,304
Ove Gusevik	NO	employee	0.050%		116,650
Jolima Invest AS	NO	employee	0.047%	Jostein Hufthammer, CFO, 100%	110,000
Torbjörg Dale Undem	NO	employee	0.036%		82,701
Tom Ormberg	NO	employee	0.032%		75,000
Narayana Raju Chintalapathi Venkata S	IN	employee	0.021%		47,548
Ola Morten Broch	NO	employee	0.020%		45,596
Tore Christian Wiese-Hansen	NO	employee	0.018%		41,346
Johan Zwiegelaar	GB	employee	0.008%		19,017
Silje Marie Opsal	NO	employee	0.004%		9,729
Stuart Fraser Andrew	GB	employee	0.004%		9,504
Sandra Hindle	GB	employee	0.002%		4,761
<b>Total</b>			<b>100.00%</b>		<b>231,812,214</b>

## Shareholders – Minerva Topco AS

### ABOUT FERD (51,89%)

Ferd is a Norwegian family-owned investment company owned by the fifth and sixth generations of the Andresen family. Ferd is committed to creating enduring value and leave clear footprints through ownership of businesses and investments in financial assets. For Ferd, value creation is about generating more than just a financial return. It is also about making a positive contribution to the growth and development of society and protection of our environment. Ferd's wide-ranging activities encompass active ownership and corporate development at private and listed companies, investment in financial assets, real estate development, investment via external managers, impact investing and social entrepreneurship.

### ABOUT TJALDUR (42,39%)

Tjaldur is an industrial holding company registered in the Faroe Islands and focuses its investments in companies in the North Atlantic. Tjaldur has comprehensive operating experience and industrial insight doing business in the Energy and Marine industry and invests in companies with improvement potential and the possibility for international growth. Tjaldur is an active owner and focuses on long term sustainable growth.

## Mintra – UBO Information

### FERD Shareholders

Ferd is 100% controlled by the Andresen family through indirect ownership from privately help holding companies.

- Mr. Johan H. Andresen voting share 69,98%
- Ms. Katharina G. Andresen voting share 15,01%
- Ms. Alexandra G. Andresen voting share 15,01%

Mr. Andresen indirectly control more than 25% of Mintra Holding AS.  
Mr. Andresen lives in Oslo, Norway, born 25.07.1961

[www.ferd.no/en/about-ferd/who-we-are](http://www.ferd.no/en/about-ferd/who-we-are)

### TJALDUR Shareholders

There are multiple shareholders of Tjaldur.  
No individual holds or control > 20% of the shares in Tjaldur.

No Tjaldur shareholders indirectly hold or control more than 9% of Mintra Holding AS.

[www.tjaldur.com/en#who-we-are](http://www.tjaldur.com/en#who-we-are)